



# INTESOL

# tesolin'

Newsletter of Indiana Teachers of English to Speakers of Other Languages

Watch the INTESOL website  
for regular updates  
[www.intesol.org](http://www.intesol.org)

**INTESOL  
WANTS TO  
HEAR FROM  
YOU!**



Do you have any teaching tips,  
lesson plans, research projects,  
or interesting ideas to share  
with the INTESOL members?

Consider submitting them to  
the newsletter!

Send an e-mail with your  
attachment to  
[news@intesol.org](mailto:news@intesol.org).

We'd love to hear from you!

#### In This Issue...

*President's Message* 1

*Conference Report* 2

*2006 Executive Board* 3

*Calls and Announcements* 6

*Membership Application* 7

©2006 Indiana Teachers of  
English to Speakers of Other  
Languages

Edited by Corinne C. Renguette  
[news@intesol.org](mailto:news@intesol.org)

## Letter From the President

Hello INTESOL Professionals,

INTESOL is better than ever! Last year we worked hard toward achieving our conference theme "Inspiring Change" by holding the conference on a Friday rather than a Saturday to encourage K-12 teachers to attend--and still have the weekend. Our *change* was also inspired by our Keynote **Annela Teement** of the University of California, Berkeley who inspired us with a multimedia presentation of lessons she learned from teachers and through her research. Her dry sense of humor had us laughing at quip after quip. Her belief that *every act of teaching is an act of advocacy* resonated with us all. A well-deserved President's Award went to **Thom Upton** of IUPUI for his long-term advocacy and dedicated work with INTESOL. I had the sense that as INTESOL-ers, we left the conference on a mission to indeed inspire change in our instructional approaches, in our school atmospheres, and among our colleagues and students. Many didn't leave--even after the official end at 3:15 (an earlier end than ever).

A very special thanks to those of you who submitted proposals, who gave stellar presentations, and to those who helped select them. Please consider submitting one or more proposals for this year's conference --it is never too early to brainstorm and invite a colleague to join in!

We are hopeful that our work together can translate into enhanced student learning and performance when and where it counts—not just at testing time.

My most special thanks goes to three of our out-going INTESOL Board member who served us faithfully and thoughtfully for their two-year term: **Karen Brakke**, our K-12 Representative; **Mary Henggeler** our Recording Secretary and **Steve LeBeau**, our Treasurer.

The theme of this year's upcoming conference, "Language, Learning and Literacy" is indeed a timely one. NCLB has made everyone more aware of academic language needs of our students and the critical role that culture plays in how our students interpret what they read and write about. It is imperative to create a world environment where differences in literacy practices can be appreciated. As teachers, students, administrators and applied linguists, we have an important role to play in fostering tolerance through understanding. We represent the best of language education and are most committed to ethnicity, diversity, and internationalism. The beautiful setting and stimulating program ensure that a memorable time will be had by all.

I personally extend my warm invitation to each of you, and I hope to see you again at the Fountains Conference Center in Carmel. And the INTESOL board joins me in saying: we look forward to a terrrrrrific year and conference! See you there!

Martha Nyikos  
INTESOL President, 2006

# 2005 Conference Report

## Conference Report:

Our 2005 super-charged conference theme was “Inspiring Change.” Besides inspiring it, we actually made some inspired changes by scheduling the conference on a Friday (for the first time) so that folks could have the full weekend off; and by scheduling a shorter day, so that we could all drive home inspired in daylight. Even the downpour of the morning didn’t dampen spirits.

About 175 committed professionals turned out despite the rainy weather, and everything went smoothly throughout the day. Kim Bassler’s dedicated staff ran the registration table very effectively and efficiently as both long-term and new members arrived.

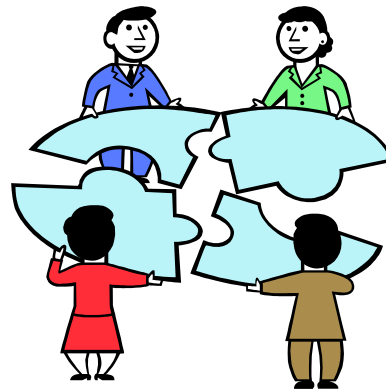
Dr. Thom Upton, of IUPUI’s English Department and former INTESOL president (2001), received the President’s Award for Outstanding Service to the Organization. Thom served as INTESOL board member from 1999-2003. Mary Theresa Seig, current INTESOL Past-President, introduced him in such a clever way that he (and we) were kept guessing about the person of so many accomplishments through the voices and opinions of many of his colleagues and students.

The keynote speaker was Dr. Annela Teemant of the University of California at Berkeley. She peppered her informative talk and video presentation with humorous remarks, such as her reference to believing in social justice—‘are those really in the standards we are to cover?’

Having four concurrent sessions (representing each Interest Section) at each time slot kept the choices for stimulating engagement copious. Even the last Interest Section workshop sessions were well attended—with members staying overtime! All-in-all the conference was deemed a success—a bright spot on a soggy day. We are already looking forward to the 2006 INTESOL Conference: Language, Learning and Literacy. A stimulating program with YOUR presentation will assure that the upcoming conference will be compelling—so please consider submitting a proposal. Keep watching the website for the call for presentations and updates!

## The 2005 Conference Planning Committee:

Kim Bassler  
 Karen Brakke  
 Steven LeBeau  
 Martha Nyikos-Conference Chair  
 Corinne Renguette  
 William Rozycki  
 Jorge Aguilar Sanchez  
 Mary Theresa Seig  
 Dan Wann



**SAVE THIS DATE!**

The 2006 INTESOL  
 conference will be on  
 Saturday, November 11 at the  
 Fountains Conference Center.

# Welcome 2006 INTESOL Executive Board members!

**President - Martha Nyikos** is Associate Professor and immediate past Chair of the Language Education Department at Indiana University. She directs the Foreign and Second Language Education program area, which includes graduate and undergraduate programs in foreign language and ESL education for certification and for preparation of teachers and curriculum coordinators internationally. She serves on the editorial board of the *Modern Language Journal*. Her research areas include socio-cognitive approaches to strategies-based language learning, models for professional teacher development and teacher resistance to change, and family native language and literacy maintenance for language minority students. "After my vice presidency and steep learning curve in organizing the 2005 conference, I am currently looking with a broader view to supporting the efforts of all involved with our premier state professional organization as we move into our 28<sup>th</sup> year."

**Vice President: Dan Wann** is a Professional Development Consultant and Certified State CASAS Trainer for the Professional Development Project of the IDOE, Division of Adult Education. He is also an Education Consultant for Goodwill Industries of Central Indiana, Inc.

In the past, Dan has served as Chair of the Adult Education Interest Section for Teachers of English as a Second Language (TESOL), and he is a member of the TESOL Task Force on Adult Education Program Standards. Dan is also a member of the National Consortium and Policy Review Council for Comprehensive Adult Student Assessment System (CASAS). He has presented at State, Regional and National conferences, and as a teacher, he worked to integrate technology in the adult ESL classroom incorporating computers, Internet, and video distance learning as a regular part of the classroom experience.

**Past President: Mary Theresa Seig** is an Assistant Professor of Applied Linguistics at Ball State University. Her professional areas of interest are Curriculum and Materials Design, English for Specific Purposes, Discourse Analysis, and Experiential Education. She has been in Indiana for a relatively short time – about six years. Prior to that she was completing her PhD in TESOL / Linguistics at Oklahoma State University where she also served as the Director of the Intensive English Program for Japanese students for a time and the Assistant Director of the ITA Program. Her Masters is in TESOL from Michigan State University.

**Executive Secretary - Kim Bassler** has been the Academic Director of ELS Language Centers at IUPUI for the last fifteen years. She is responsible for testing and scheduling international students in the intensive English program. In addition, she supervises the instructors, assists with curriculum development, and teaches. She received her B.A. from Indiana University and she's currently working on her Master's at IUPUI. As the Executive Secretary for INTESOL, her major responsibility includes maintaining the membership information for INTESOL members and associated institutions and agencies. Kim thinks that the best part of this position is having the opportunity to match the names in the database with all the faces of members at our annual conference in the fall. Please contact Kim anytime you need to update your contact information for INTESOL.

**Recording Secretary - Karen Lybeck (Ph.D.)** is an Assistant Professor of Applied Linguistics at Ball State University. She became a member of INTESOL when she moved to Indiana last year. Her areas of interest include second-language teacher education, the role of social context and affective factors in second-language acquisition, and interlanguage phonology. Karen just accepted a new position in MN, so **Mary Henggeler** will be the interim secretary again.

**Treasurer - Suzan Stamper**, a native Hoosier from Greencastle, earned her MA in TEFL at Ball State in 1983. Since then, Suzan has taught in Hong Kong, China, Kansas, and Indiana. With interests in computer-assisted language learning (CALL), Suzan is a co-manager for NETEACH-L (a listserv for ESL/EFL teachers who use technology) and an active member of TESOL's CALL Interest Section, where she served as Chair in 2002-2003, a steering committee member since 1998, and an Electronic Village Special Events organizer since 1995. Now an ESL lecturer at IUPUI, Suzan is looking forward to getting involved with INTESOL.

## 2006 Executive Board (con't.)

**University/IEP Rep - William Rozycki** shares concerns and experiences with all of you, because he is both an ESL lecturer in the English Department at IUPUI and also a director of ESP intensive English programs (in his role as assistant director of the Indiana Center for Intercultural Communication at IUPUI). Since members usually get together face to face only at the annual INTESOL conference, Bill hopes you will contact him by email ([wrozycki@iupiu.edu](mailto:wrozycki@iupiu.edu)) or phone (317-278-2514) to share your questions, concerns, or interests. He serves as a sounding board, a complaint conduit, and an advocate for policies and approaches that improve our lives and our work in university teaching and intensive program management and teaching. Bill looks forward to hearing from you and learning from you!

**Adult Ed Rep - Marilynn Garvey, MA**, has been an ESL teacher in the Indianapolis Washington Township Adult Education program since 1995. Currently, she teaches life skills ESL to students with varying backgrounds and skills. She also has taught extensively in the workplace through DOE English Works, Adult Ed Works, Washington Township Continuing Education Programs, IN Literacy Foundation Volunteer Programs and privately. As a board member, Marilynn will help INTESOL address the needs of ESL teachers and students in adult education programs, volunteer literacy networks and developing workplace programs.

**K-12 Rep- Katie Brooks** is a visiting lecturer in language education at IUPUI and a PhD candidate at Kansas State University. She is a former Indianapolis Public Schools ESL teacher. In the past, Katie has been actively involved in INTESOL as a conference presenter and board member. Her areas of interest include how English language learners become a part of the academic Discourse community and educational change.

**Graduate Student Rep - Shari Bochard-Pentecost** acquired her Bachelor's Degree in English (Language) from IPFW in 2005, graduating with Highest Distinction. Currently, she is finishing her TESOL Certification course work at IPFW, while beginning her Master's Degree courses at Ball State University, majoring in Adult and Higher Community Education. She also teaches ESL to adult students at her church. Her primary interest is in the adult education/learning process and more specifically, adult second language acquisition with minimal education in the L<sub>1</sub>.

**Communications Editor - Corinne C. Renguette** graduated in 2004 from IUPUI with an M.A. in English. She holds Certificates in Technical Communication and TESOL. She is in her 2nd year of the Applied Linguistics Ph.D. program at Ball State University and her 2nd year as Communications Editor for the INTESOL Board. Corinne would love to incorporate ideas from all of you into the newsletter. Please send your ideas, teaching tips, stories, etc. to [news@intesol.org](mailto:news@intesol.org).

### WANTED: CONVERSATION PARTNERS

Do you have a project that worked well in your class?

Do you have an idea about how to address a classroom issue?

The ITJ is designed to help continue our Conversations across the aisle.

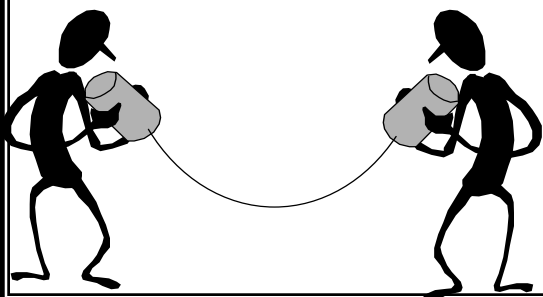
Will you contribute to that conversation?

Submit an article to the INTESOL Journal.

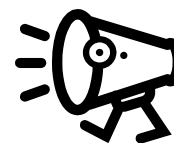
Submission Deadline: June 15, 2006

Theme: Language, learning, and literacy

Questions: e-mail [journal@intesol.org](mailto:journal@intesol.org)



## CALLS AND ANNOUNCEMENTS



Call for submissions for the 2006 INTESOL Conference  
will be posted on the website soon!  
Keep checking <http://www.intesol.org>

The MITESOL conference will be held on Friday & Saturday,  
October 20 & 21 in Mt. Pleasant, MI. The focus this year is on  
Assessment, Materials Development, and CALL.  
See the INTESOL website for the call for papers:

[http://www.intesol.org/professional\\_development.htm](http://www.intesol.org/professional_development.htm)



### MISSION STATEMENT

INTESOL's mission is to strengthen the effective teaching and learning of English as a Second Language in the State of Indiana while respecting individuals' language and cultural backgrounds. To this end, INTESOL, as a statewide professional association, supports and seeks to inspire those involved in English language teaching, teacher education, administration and management, curriculum and materials design, and research; provides leadership and direction through the dissemination and exchange of information and resources; encourages access to and standards for English language instruction, professional preparation, and employment; and supports the initiatives of its international parent organization TESOL, Inc.

Presenting at a conference?

Let INTESOL help!

Apply for an INTESOL  
travel grant!

\*\*\*\*\*

Did you know we also offer research  
and development grants?

\*\*\*\*\*

For more information go to  
[www.intesol.org](http://www.intesol.org)

**APPLY NOW!**

# INTESOL-JOURNAL (ITJ)

## Call for Fall 2006 Article Submissions

### Theme: Language, learning, and literacy

#### About the journal

INTESOL JOURNAL (ITJ) is a professional journal issued by the Indiana Teachers of English to Speakers of Other Languages (INTESOL). ITJ encourages the submission of previously unpublished articles on topics of significance to individuals concerned with the teaching of English as a second or foreign language. The journal accepts and publishes original articles primarily in the research and practice of the teaching English to speakers of other languages, which include K-12, university and adult ESL education settings. ITJ prefers that all submissions be written so that their content is accessible to a broad readership, including individuals who may not have a familiarity with the subject matter addressed.

#### General procedures

- Contributors of full-length articles are strongly encouraged to submit manuscripts of no more than 15-20 double-spaced pages or 7000 words (including references, notes, and tables).
- Full-length articles should include an abstract no more than 200 words. Before accepting any article for publication, the editor shall solicit recommendations by two qualified reviewers. These reviewers will be members of the INTESOL Editorial Board, or other qualified experts. The names of all readers will be disseminated annually. To facilitate the blind review process, write the authors' names only on a cover sheet, not on the title page.
- Articles should conform generally to the [American Psychological Association \(5th Edition\)](#) format.
- Text should be prepared in Microsoft Word. Please put all figures and tables in place in the text (rather than at the end). Number and title all figures and tables.
- All manuscripts – initial and revised – should be sent by e-mail attachment.
- Email your manuscript and direct any questions to: [journal@intesol.org](mailto:journal@intesol.org)
- Review of manuscripts is ongoing. The deadline for initial review of manuscripts for the Fall 2006 issue is June 15, 2006.

More detailed guidelines can be found in INTESOL JOURNAL (ITJ).

